

# DINE-AMICS

[www.dineamics.com](http://www.dineamics.com) [info@dineamics.com](mailto:info@dineamics.com)  
 800-331-1129 ( 24 x 7 info line )  
 480-970-8285 fax

**Dine-amics Order Form**  
**Please sign and FAX back:**  
**1-480-970-8285**

Date: \_\_\_\_\_

Please sign and return as your purchase order.

Your Purchase Order #: \_\_\_\_\_

If it's not on this page, it's not included in the quote.

Your Company Name: \_\_\_\_\_

Shipping: COD/ FOB (all costs from manf plant to end-user)

Terms / Special Instructions: 50% down to order / 50% balance to ship / all monies due in 30 days from deposit.

Quantity	Product description	unit price	ext price
	<b>BASE SYSTEM 2-TOUCHSCREEN PACKAGE</b> 2 Combo SFF Computer & 15" Flatscreen Touchscreen units 2 High-speed Thermal Receipt Printers 2 USB Credit Card Swipes 1 High-speed Thermal Remote Order Printer (2 color opt.). 1 Computerized Cash Drawer 1 Set of Device Cables made to custom lengths 1 Set of Manuals 1 DINEAMIC POS BASE SOFTWARE SYSTEM (see brochure). 1 10 HOUR Yearly on-line support package  Shipping is additional COD/FOB		\$6995.
Modifications:          TWO-DAY BLUE LABEL HOT SWAP IS INCLUDED OVERNIGHT HOT-SWAP IS AN OPTION IT MUST BE SEPERATLY LISTED AS A LINE ITEM ON THIS PAGE.			
Total:	Add \$295. if not signed to CC process through Dine-amics/Versatalis Paymentech. All systems add \$79 per Touchscreen for Credit Card connect.		\$6995.



\_\_\_\_\_  
 Authorized customer signature  
 I have read and understood the 12 page brochure "1111". Please fax back to  
 (480) 970-8285 or em to [office@dineamics.com](mailto:office@dineamics.com)

An Invoice referencing this PO will be sent back to you for your records.  
 Credit card payments add 4% quote only

# DINE-AMICS

[www.dineamics.com](http://www.dineamics.com) [info@dineamics.com](mailto:info@dineamics.com)  
 800-331-1129 ( 24 x 7 info line )  
 480-970-8285 fax

**“\$6995 “STARTER SYSTEM SPECIAL”**

first year remote access software support included.  
 as seen in Restaurants & Institutions / Restaurant Business.

## FULLY EXPANDABLE.



[www.dineamics.com](http://www.dineamics.com)

(2) INTEL Computers.  
 2.2GB CPU,  
 1GB RAM,  
 80GB HARD DRIVES

High-speed 33  
 Lines-per-second  
 Kitchen  
 Printer.

Computerized Cash Drawer.

USB Credit Card Swipes.  
 Also reads Gift Cards.

We setup your entire menu  
 BEFORE it ships!

Lease-to-Own this system for \$139 per month.  
 \$275 cash out of pocket  
 delivers your system up &  
 running in 30 days or less.

(2) 15" Flatscreen  
 Touchscreen Monitors.  
 USB Plug & Play.  
 Re-calibrate yourself  
 On-the-Fly.

(2) High-speed 33  
 Lines-per-second  
 Receipt Printers.

Change prices, add  
 items on-the-fly

Interfaces to your existing  
 office computer  
 (not required)

Screen modes:  
 Full Service  
 Cashier / Hostess  
 Bartender  
 Take-out / To-go  
 Delivery / Catering  
 Pizza

**Limited time offer!**

## INCLUDES EVERYTHING SHOWN!!!

### SALES ANALYSIS KEEPS TRACK OF EVERYTHING!

Every Item, modifier, drink, add-on, void, comp, discount, etc. Collect for Everything sold! Helps eliminate human error in taxes, tips, etc.

### QUICKBOOKS GENERAL LEDGER INTERFACE

Is included. Dine-amics automatically collects & organizes all Sales and Receipt POS activity to your Quickbooks General Ledger.



### TIMECLOCK / LABOR INCLUDED

Press Timeclock button from any screen. Punch in/out, print your own timecard and schedule. Tips declared on punch-out.



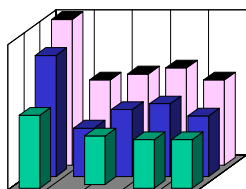
### PROCESS CREDIT CARDS & GIFT CARDS

Credit Cards and Gift Cards can be swiped at any screen. Ask about our Frequent Diner, All Campus Cards, ID badges, Manager Cards. All cards require PC Charge \$285.



### MENU ITEM COUNTDOWN & INVENTORY VALUE

A real-time computerized chalkboard. Tells Servers what's left BEFORE you run out. System calculates Ending Inventory Values.



### IMMEDIATE SOFTWARE SUPPORT OVERNIGHT HARDWARE SUPPORT (overnight optional)

Call us. We live-remote access your system "On-the-Spot".

You can do the same from home!



**GIFT CARD SOFTWARE IS INCLUDED FOR A LIMITED TIME.  
 WHY PAY OUTSIDE COMPANIES TO MANAGE YOUR OWN MONEY?**

# SEE A LIVE DEMO FROM YOUR HOME COMPUTER!



Displays the actual POS on your computer screen.

**It's easy!**

*You don't have to be a computer whiz. All you need to do is open an email we send.*

**Please call 1-800-331-1129 for instructions.**

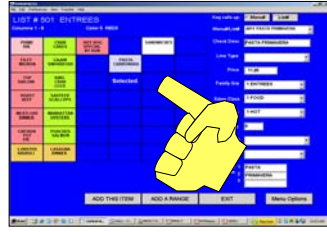
***We both see the same screens at the same time.***

***Use your mouse to point & click at the touches.***

# INCLUDES OUR BASIC SOFTWARE:

## HOW EASY IS IT TO MAKE CHANGES?

In Manager Mode touch the spot you want to change. Choose changes from a drop down Window.



## WE SET UP YOUR ENTIRE SYSTEM

Send us your menu. We pre-load all items, prices, lists and modifiers. We pre-program your screens. When you get it it works "out-of-the-box"!



## HOW DO I GET SUPPORT?

Call us. We get right on your system and see the same Touchscreen the caller is calling about.



## CAN I ACCESS IT FROM HOME?

Complete access for the owners anytime night or day. Get right on the system and see or do anything just as if you were right there. Watch the registers operate Live!



## QUICKBOOKS GENERAL LEDGER INTERFACE

Is included. Dine-amics automatically collects & organizes all Sales and Receipt POS activity to your Quickbooks General Ledger.



## DOES IT PROCESS CREDIT CARDS & GIFT CARDS?

Credit Cards and Gift Cards can be swiped at any screen. Also handles frequent Diner, All Campus Cards, ID badges, Manager Cards. Requires PC Charge (ask).

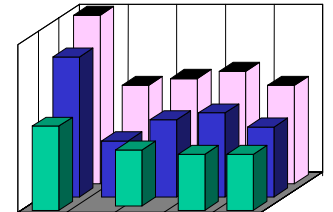


## SALES ANALYSIS KEEPS TRACK OF EVERYTHING!

Every Item, modifier, drink, add-on, void, comp, discount, etc. Collect for Everything sold! Helps Eliminate human error in taxes, tips, etc.

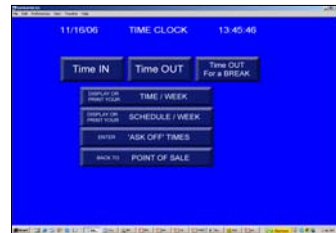
## MENU ITEM COUNTDOWN & INVENTORY VALUE

An computerized chalkboard, if you will. Tells Servers what's left BEFORE you run out. System calculates Ending Inventory Values.



## TIMECLOCK INCLUDED

Press Timeclock button from any screen. Punch in/out, print your own timecard and schedule. Tips declared on punch-out.



## PRINTS ORDERS TO THE KITCHEN

Print orders to printers or to a Kitchen Monitor with a bump bar, or both. No limits. Item separation and timing options.



## BACK-OFFICE OPTIONS.

Nothing is forced on you. Our Back-office comes as Integrated Modules so you can expand if & when you want to.

- RECIPE WRITING
- INVENTORY RE-ORDER
- LABOR SCHEDULING
- GENERAL LEDGER
- ACCOUNTS PAYABLE
- ACCOUNTS RECEIVABLE
- PAYROLL

## TABLE MAP INCLUDED

Setup multiple rooms. Hostess and/or Server access. Tables change colors as designated steps take place. Built-in sales, turnover, and availability.



**START WITH THE BASIC PKG. THEN DECIDE IF & WHEN YOU WANT TO EXPAND.**  
Please call us at 1-800-331-1129 to arrange a complete demonstration at your convenience.

# HARDWARE SPECIFICATIONS

## 15" Touchscreen Monitor with Small Form Factor Computer



## All-in-One POS OPTION. Additional cost. The computer is built into the back of the screen.



### The Computer Itself:

Processors Supports Intel LGA775 Conroe Processors for FSB 1066/800/533MHz  
 Core 2 Duo E Series CPU Socket 775 Celeron and Pentium 4 processors  
 Memory DDR 2 667/533/400 SDRAM 240-pin DDR DIMM x 2 up to 2GB  
 Video Integrated VIA S3 Graphics UniChrome Pro Integrated Graphics Processor  
 Audio AC'97 CODEC onboard (VIA ALC202A Codec)  
 Onboard LAN Broadcom 4401 (10/100 Mb) ready for gigabyte LAN 5705  
 System BIOS Award BIOS 4MB Flash ROM  
 Chipset VIA P4M890 North Bridge Chipset and VT 8237R South Bridge Chipset

### Physical Features

Small Form Factor Micro ATX  
 Storage Device options ▪ 1.44MB 3.5" Floppy Drive, ▪ CD-ROM, DVD-ROM, or CD-RW 40GB or higher standard IDE or SATA hard drives  
 PCI Expansion Slots ▪ 2 x 32-bit PCI slots, 1 PCI Express x1 and 1 PCI Express x16 slots  
 Front Panel I/O Connections ▪ Power, HDD, Suspend LED Power Switch ▪ 2x USB Ports 2.0 1x Mic-in ▪ 1x Headphone  
 Rear Panel I/O Connections 4x USB ports 2.0 1x LAN connector (RJ45) 1x PS/2 mouse port 1x PS/2 keyboard port 1x parallel port, 1x VGA port, 1x Serial port, Line-in, Line-out, Mic-in, AC power connector (AC-in) on PSU  
 Power supply ATX 220W internal power supply  
 Weight (lbs) Net 8.4 lbs. Gross 13.8 lbs.  
 Dimensions 14.25" (L) x 12.2" (W) x 3.75" (H)

## THE PRINTERS:

The TSP600 is the ultimate value in thermal receipt printing. This high speed, low cost direct thermal printer offers many of the features found in more expensive printers. Full graphics and barcode printing support is standard. Two-color thermal printing support is also included.

The TSP600 also features recessed cable connections to keep dirt and debris away from the sensitive connection ports. These recessed connections also greatly reduce the risk of cables being tampered with or accidentally unplugged.

Available in both tear bar and auto cutter models, there's a TSP600 fitted to nearly any application for a direct thermal printer.

"Drop-in & Print" paper loading means more time spent printing; less time spent fiddling with difficult to load printers.

STAR MICRONICS  
16 line-per-second  
Thermal Printers

Black option



STAR MICRONICS  
Dot-Matrix High-impact  
Remote Order Printer



Star Micronics America, Inc. warrants this product against defects in materials and workmanship with a warranty coverage **THREE YEARS FOR PARTS AND ONE YEAR FOR LABOR** from the original date of purchase. The warranty coverage for autocutter assemblies and print heads is one year parts and labor. This warranty shall apply only if the product fails to function properly under normal use.

## FULLY INTEGRATED DEVICES:

Peripheral Devices to suit your needs. Every System is custom Tailored. Scales, Bar Code or Mag Stripe Readers & imprinters, Display Poles, Kitchen Monitors, Door Locks, All Campus Cards, Dispenser Interfaces, Hotel Interfaces, Security Cameras, etc.



# HOW EASY IS IT TO MAKE CHANGES?

The screenshot shows the DINEAMICS3 software interface. The main window is titled "LIST # 501 ENTREES" and displays a grid of menu items. A yellow hand icon points to the "PASTA CARBONARA" item, which is labeled "Selected". The right side of the interface contains various configuration options for the selected item, including "Menu#/List#" (6011 PASTA PRIMAVERA), "Check Desc" (PASTA PRIMAVERA), "Line Type", "Price" (11.95), "Family Grp" (1 ENTREES), "Sales Class" (1 FOOD), "Dup Printer" (1 HOT), "Priority" (0), "Follow-up List", and "Color Code". The bottom of the screen features buttons for "ADD THIS ITEM", "ADD A RANGE", "EXIT", and "Menu Options".

Touch the square where you want the item to go.  
Choose the item from the right (or make a new one).  
Change the prices or modifiers ON-THE-FLY.  
That's It!

# WE SET UP YOUR MENUS

BEFORE IT SHIPS!



## SEND US YOUR MENUS.

WE PRE-LOAD ALL YOUR ITEMS, PRICES, AND MODIFIERS FOR YOU.

All buttons are color-coded, programmed and positioned exactly how you want them.

You approve the layout during the staging process.

When it's exactly how you want it, tell us to "Ship it!"

**WHEN IT ARRIVES IT'S READY-TO-GO / OUT-OF-THE-BOX.**

Don't spend your valuable time entering data by trial & error.

Dine-amic comes fully loaded and you will have been pre-trained to make your own changes.

# CAN I ACCESS IT FROM HOME?



FROM THE ROAD



FROM HOME



FROM WI-FI

**YES!**

You can securely access your system from anywhere.  
“Get on” your system and do anything, just as if you were right there.



You can even “watch” the Cashier, Bartender or Server’s screens live!

***See what’s going on when you’re not there.***

MONITOR THE TOUCHSCREENS, LIVE.

PULL UP-TO-THE-MINUTE SALES REPORTS.

REVIEW REAL-TIME LABOR COSTS.

SEE WHO’S STILL PUNCHED IN & WHY.

SEE CURRENT CUSTOMER COUNTS & PROJECT SHIFT PROFIT.

DO BACK-OFFICE WORK WITHOUT DISTURBING THE P.O.S.

LOTS MORE...

# HOW IT ALL WORKS



Start with our basic 2-Touchscreen system configuration and modify it any way you want.

Add (or subtract) Touchscreens, Printers, Cash Drawers, Bar Code Readers, etc. Tell us exactly what you need. Every system is custom tailored to your exact specifications.

Buy only what you need now. Fully expandable if & when you want to.

We get your entire system setup in our offices ahead of time.

Send us your menus. We pre-load your Items, Prices, Modifiers, Specials, Lists, Color-code the buttons, Program the Touchscreen Layouts, make the unique modifications everyone needs.

We even Teach and Train you on your own system using your menus!

When you tell us the system is exactly how you want it, we ship it.

When it arrives, it's Ready-To-Go.

We continue to Support you after your system arrives. We can connect to each Touchscreen and see exactly what the caller has in front of them.

You have Remote Access from Home. Do anything just as if you were there. Or, just sit back and watch the registers live!

We obviously don't have the huge Dealer Mark-ups of other Systems. This is industry standard Hardware. Nothing is "proprietary".

Runs on standard Windows. The system can be used for other applications and Web access, if you wish.

Full Security. You set access controls to every program and function (Voids, Discounts, Comps, etc.).

The system has options to automatically write Back-up Files to another Hard Drive OR another Computer!

Credit Card Processing to the processor of your choice. We will supply the necessary PC Charge if signed through Dine-amics.

Gift Cards, Frequent Diner Cards, Manager Cards can all be read by the Touchscreen swipes. Ask about these options.

**Table Map is included.**

**Timeclock is Included.**

**Daily / Weekly Labor Cost is Included.**

**Sales Analysis is Included.**

**Menu Item Countdown is Included.**

**Inventory Value is Included.**

**Liquor usage is automatically computerized using your standard pours.**

**Remote Access from Home is Included.**

**Quickbooks Interface is included (sales & receipts posted to General Ledger).**

**Discounts, Comps, Voids, Split Checks, Separate Checks, Multiple Payment Forms are all included.**

**Too many features to list.**

**Call 1-800-331-1129 for a FREE DEMONSTRATION.**



# WHO'S RESPONSIBLE FOR WHAT?

These are some of your responsibilities as the "end-user":

**Shipping.** Shipping is COD FOB manufacturer's plant. Which means you pay from the manufacturer to your site. Arrives COD for the shipping charges.

**Cable.** We build the device cables to custom length. Network cable is up to you. Check building code requirements.

**System Printer.** Normally we connect to the existing one. It's up to you to have a compatible one.

**Firewalls, Antivirus & security tools.** You supply your own. Everyone has their favorites. You must be knowledgeable of your own ISP, connection and router/firewall products & settings. If you don't know and we need to spend time learning about your provider, modem, and router capabilities, your support block is debited.

**Internet connection.** You provide a working DSL/Cable & router fully tested with port forwarding ahead of time. Help in setting up will be debited from your support block. Dial-up modems are usable, but slow and line charges are billable. The DSL line can be used to process credit cards at high-speed over the Internet and enables our on-line support.

**Credit Card Verification.** If you do not setup your account through Dine-amics there is a setup charge of \$295 plus \$79 per Touchscreen swiping cards. This simply covers our cost for the PC Charge Software. You can supply it yourself, if you like. PC Charge support is your responsibility to maintain.

**Power protection.** We recommend units that cover damage by lightning strikes. Typically for less than \$20 you can get \$25,000 worth of protection. It's cheaper than your business insurance and won't raise your rates.

**Clean electrical power.** Use common sense and don't plug a touchscreen into the same outlet with a winding motor (compressor or blender). Don't lay cable over fluorescent light fixtures, etc.

**Support payment.** You are required to pre-purchase a block of ten hours time per year at the then current rate. This can be used for Training or data entry work (setup a new menu for instance). The time is NEVER USED FOR A FIX OR BUG IN OUR STANDARD PROGRAMS. 10 hr block expires one year from the date of system delivery.

**Standard Programs VS Customized programs.** Any program changes to standard programs will make them a customized program and all support to a customized program will be billable unless otherwise contracted.

**Menu Information.** Dine-amics does a one-time basic load of your menu items, prices and Touch Screen layouts. It is up to you to provide us the information in a timely manner and to check to make sure it's how you want it before the system ships to you. Once you receive your system all changes will debit down time from your support block. Any systems left waiting for user information past 30 are subject to immediate shipping, as is.

**Purchase Order & EULA returned.** Your purchase Order must be signed and returned along with your initial deposit in order for us to start work on your system. The End User License Agreement must be signed and returned before shipping your system. We will not run live without it. In the computer world, this is normally what zooms by and you click "I Agree". We like to print them out so people actually read them. It promises not to make copies or resell our programs, etc.

**On-site Installation is available if you need it. It will cost extra.** These days, it's usually not necessary. Now we do everything in our offices we used to do on-site including training by Remote Desktop Sharing. It's really up to you and your level of comfort.

**Using existing hardware.** Unfortunately we can't guarantee using any existing hardware will be fully compatible. We have run on many brands and found the best answer is to try it. Necessary modifications to software will be debited from your support block of 10 hours.